

---

## Medicare Service Data

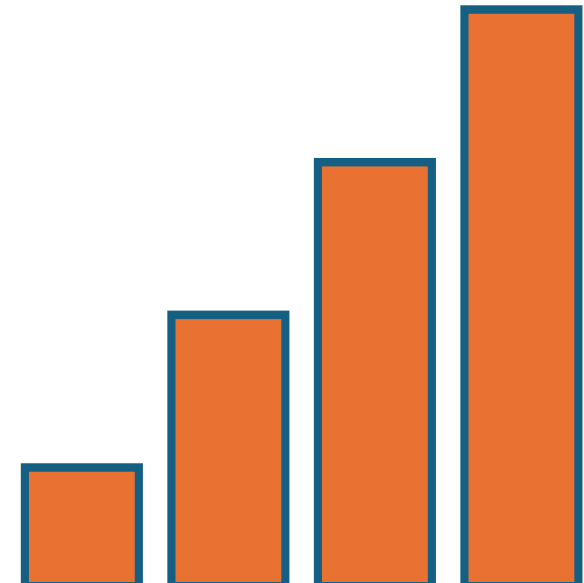
### Geographic Variation for Inpatient Hospital, ER, ASC and SNF Services

---

National, Maryland w/Select Counties,  
District of Columbia, Virginia & Northern  
Virginia Jurisdictions

---

2014 & 2023



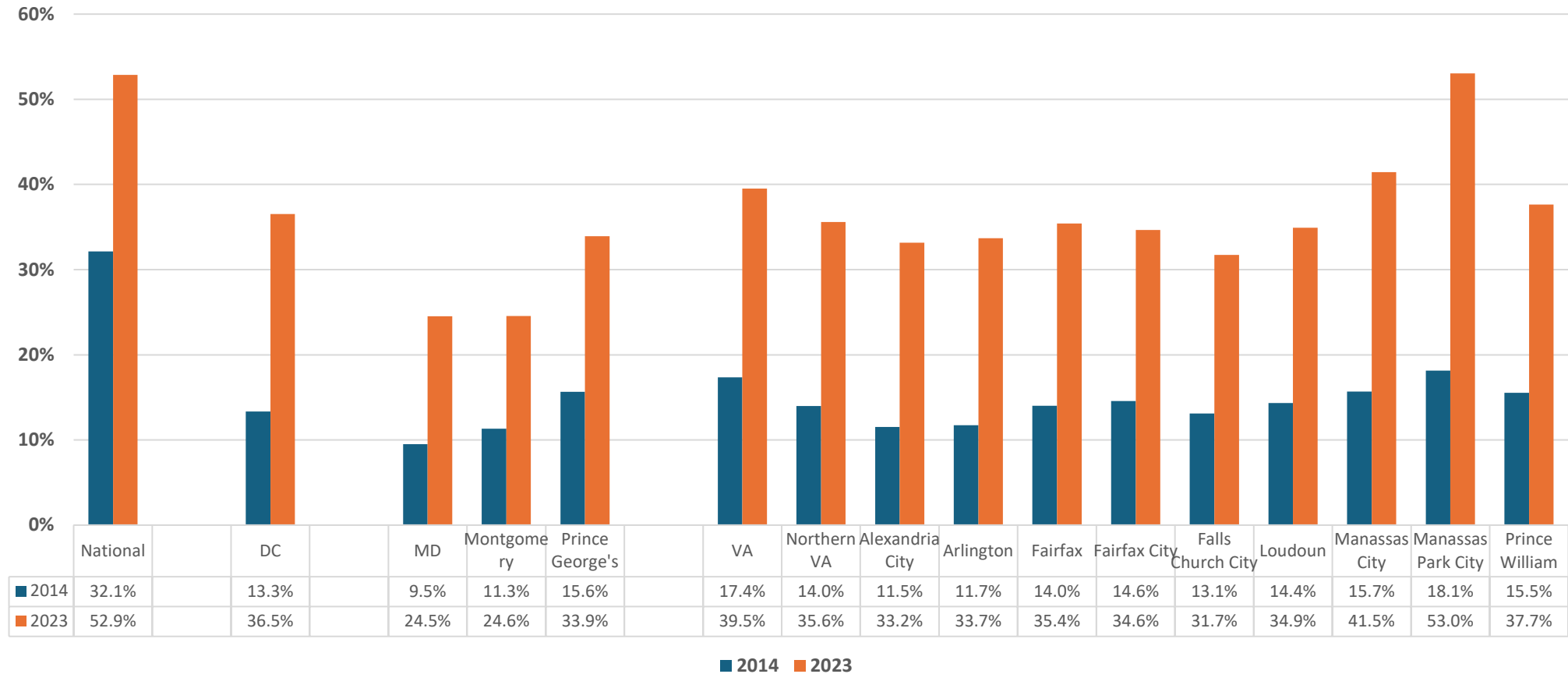
## **Medicare Geographic Variation Data**

- **Large, common data set across geographies: U,S, States, Counties**
- **Includes both service volumes and payment information**
- **Permits identification of trends over time, e.g., last decade (2014-2023)**
- **Is defined population-based data**

## Notable General Points Detailed

- Significant decreases in all jurisdictions in inpatient hospital use, 2014 to 2023
- Increases in outpatient/ambulatory services, notably ASCs
- Substantial shift from fee for service to Medicare Advantage plans
- Fewer dual eligibles (Medicare & Medicaid) in Virginia & northern Virginia
- Generally, lower per capita fee for service costs, payments in northern Virginia
- Sharp increase in ambulatory surgery use between 2014 and 2023
- Decrease in nursing home use nationwide, Virginia, northern Virginia

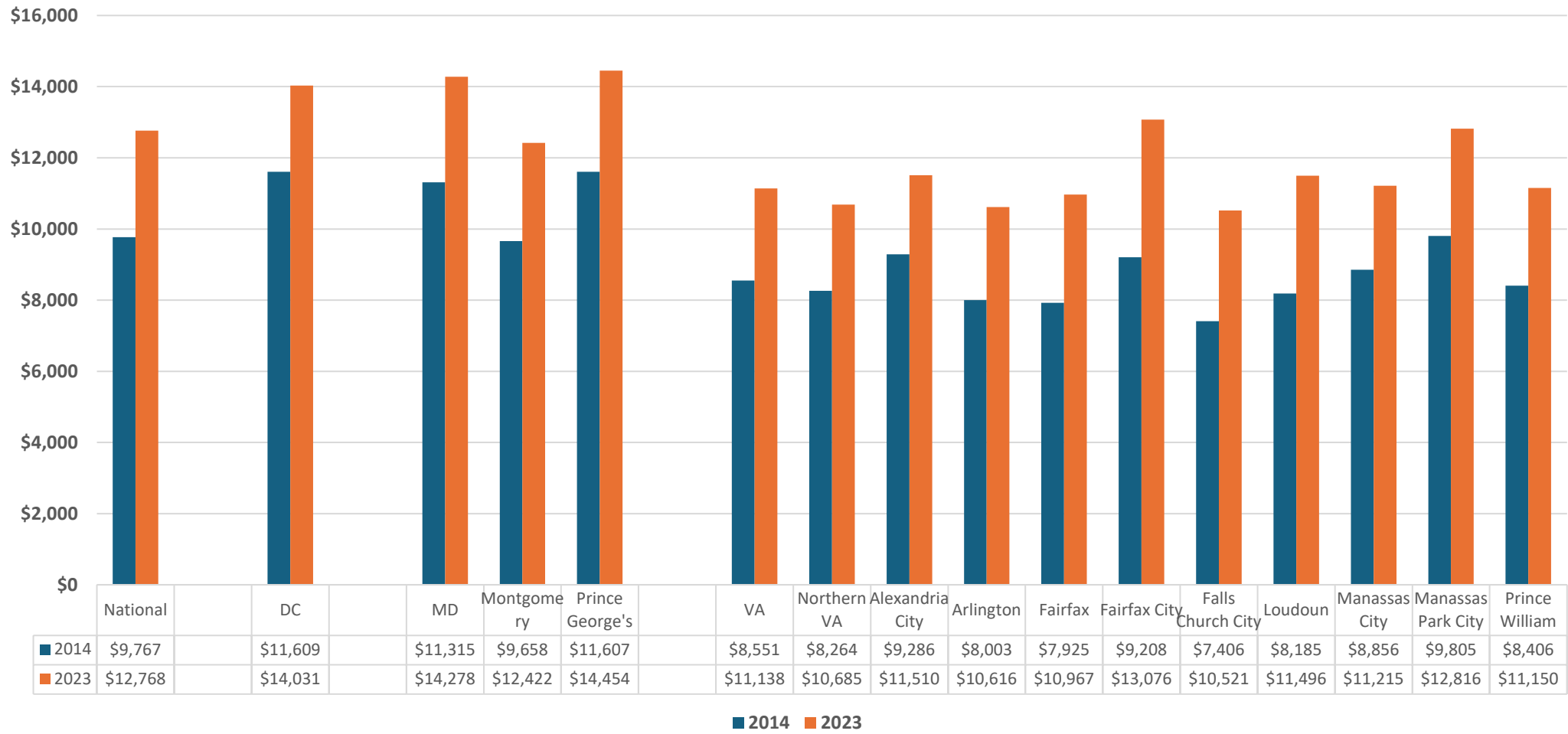
**Percentage of Beneficiaries who were Enrolled in a Medicare Advantage (MA) program**  
**National, Maryland w/Select Counties, District of Columbia, Virginia & Northern Virginia**  
**2014 & 2023**



**Percentage of Medicare Fee-for-Service Beneficiaries who were Eligible for Medicaid**  
**National, Maryland w/Select Counties, District of Columbia, Virginia & Northern Virginia**  
**2014 & 2023**



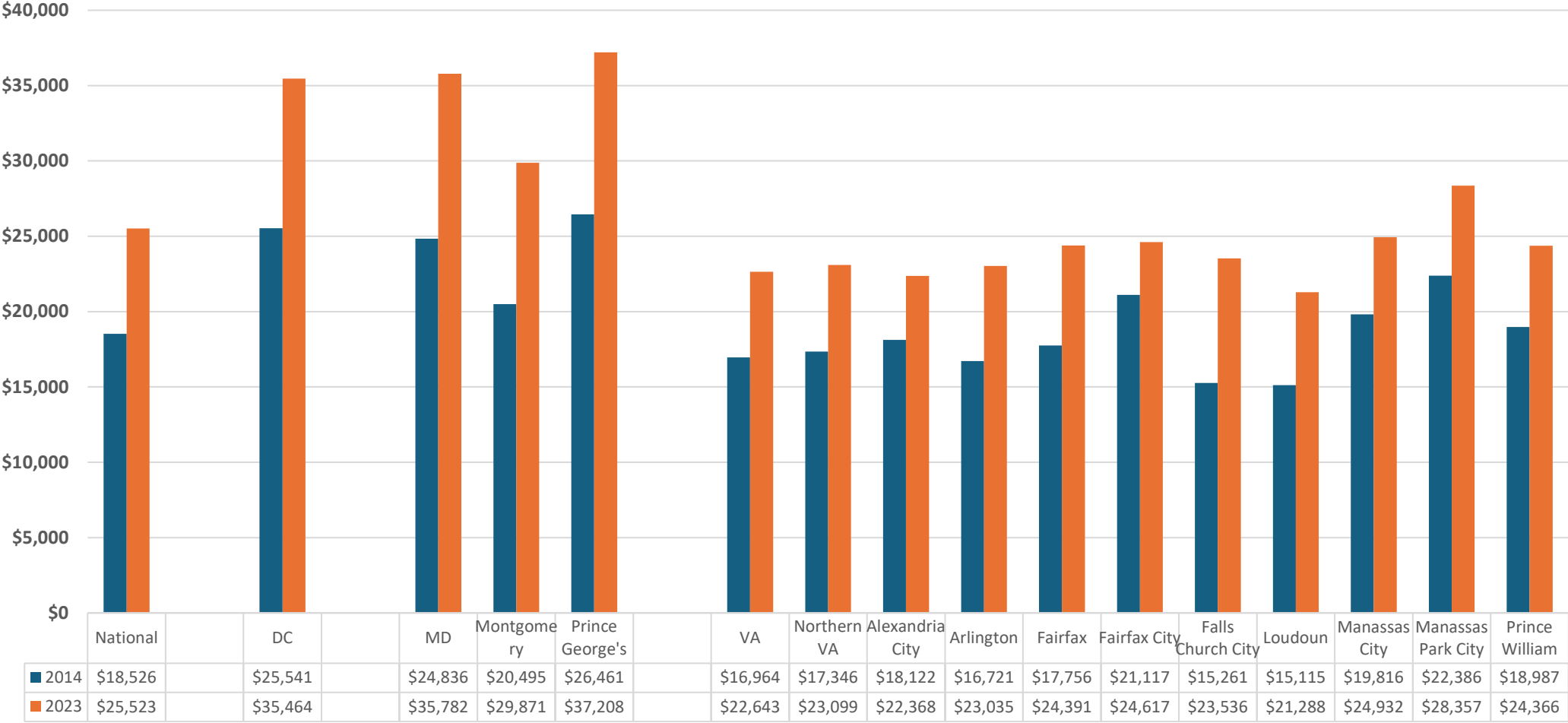
**Actual per capita FFS Medicare payment for beneficiaries**  
**National, Maryland w/Select Counties, District of Columbia, Virginia & Northern Virginia**  
**2014 & 2023**



# Adjusted (geographic) per capita FFS Medicare payment for beneficiaries National, Maryland w/Select Counties, District of Columbia, Virginia & Northern Virginia 2014 & 2023



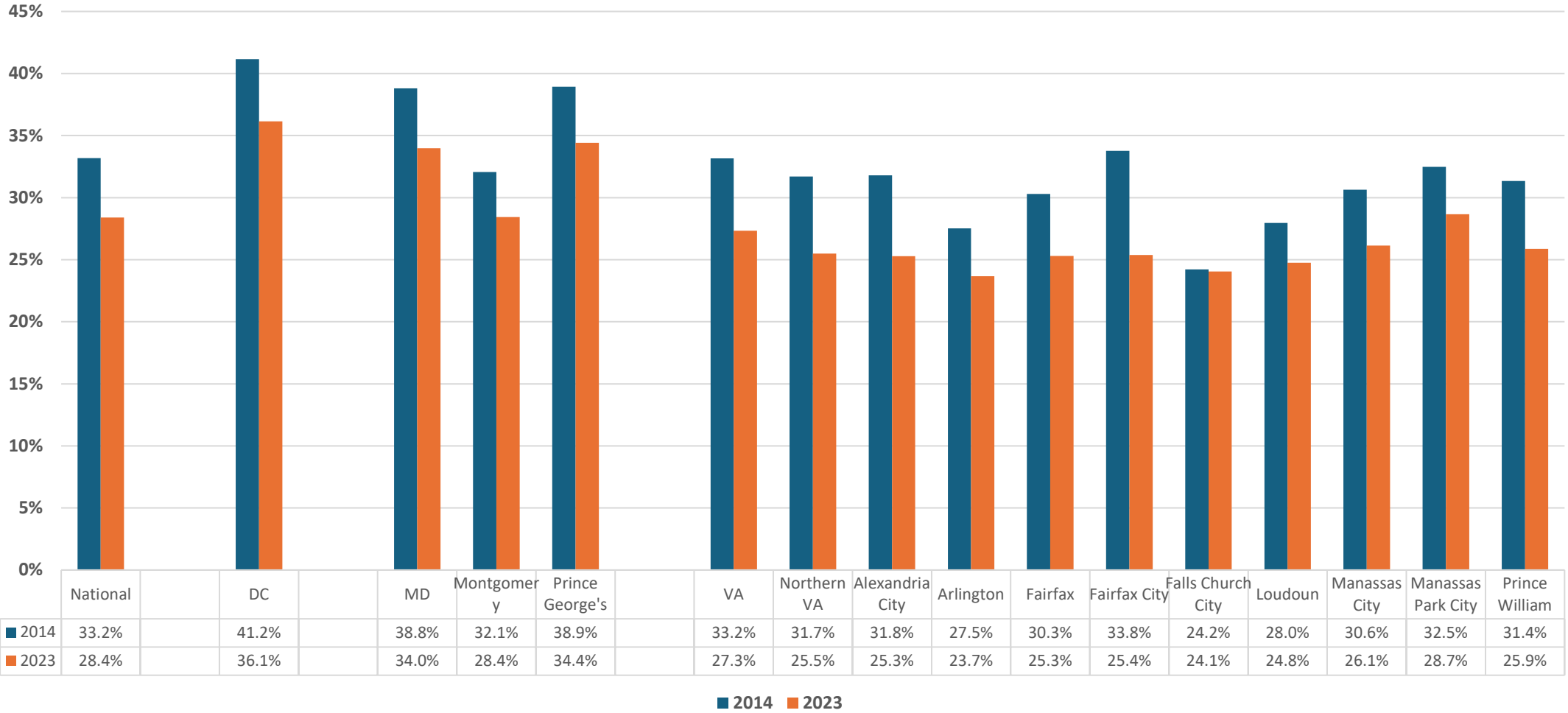
**Actual per user FFS Medicare payment for Hospital Inpatient services**  
**National, Maryland w/Select Counties, District of Columbia, Virginia & Northern Virginia**  
**2014 & 2023**



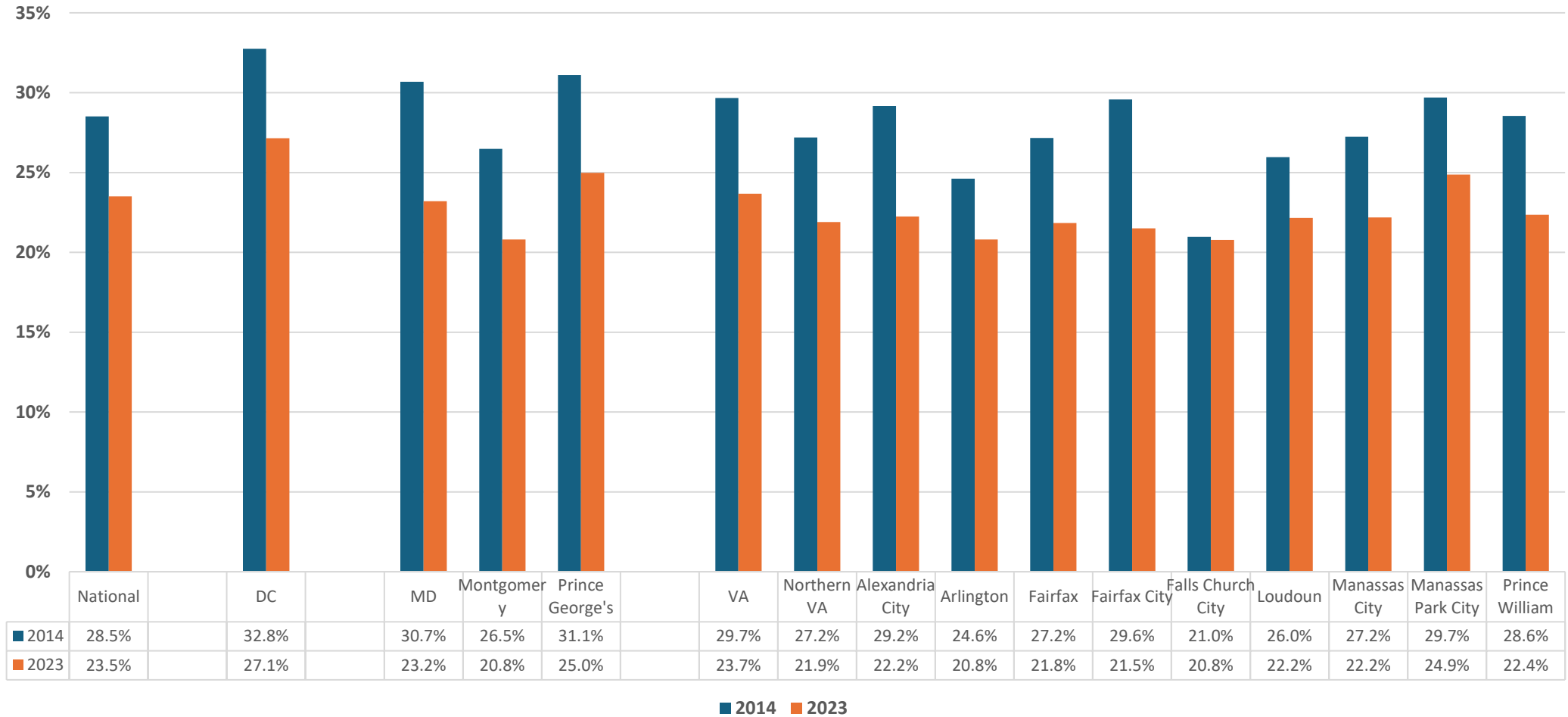
■ 2014 ■ 2023



Actual FFS Medicare payment for Hospital Inpatient services as a percent of total  
National, Maryland w/Select Counties, District of Columbia, Virginia & Northern Virginia  
2014 & 2023



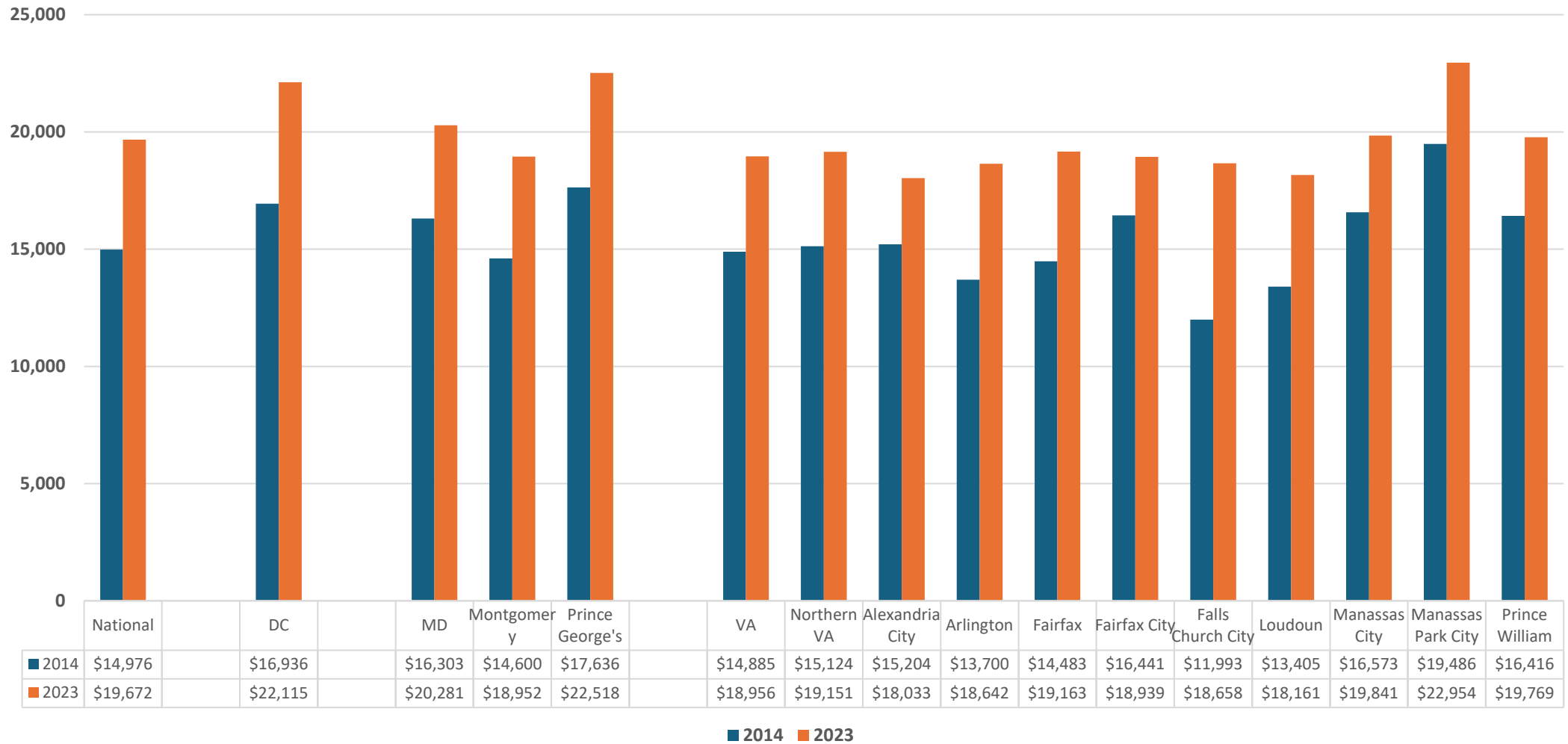
**Adjusted FFS Medicare payment for Hospital Inpatient services as a percent of total  
National, Maryland w/Select Counties, District of Columbia, Virginia & Northern Virginia  
2014 & 2023**



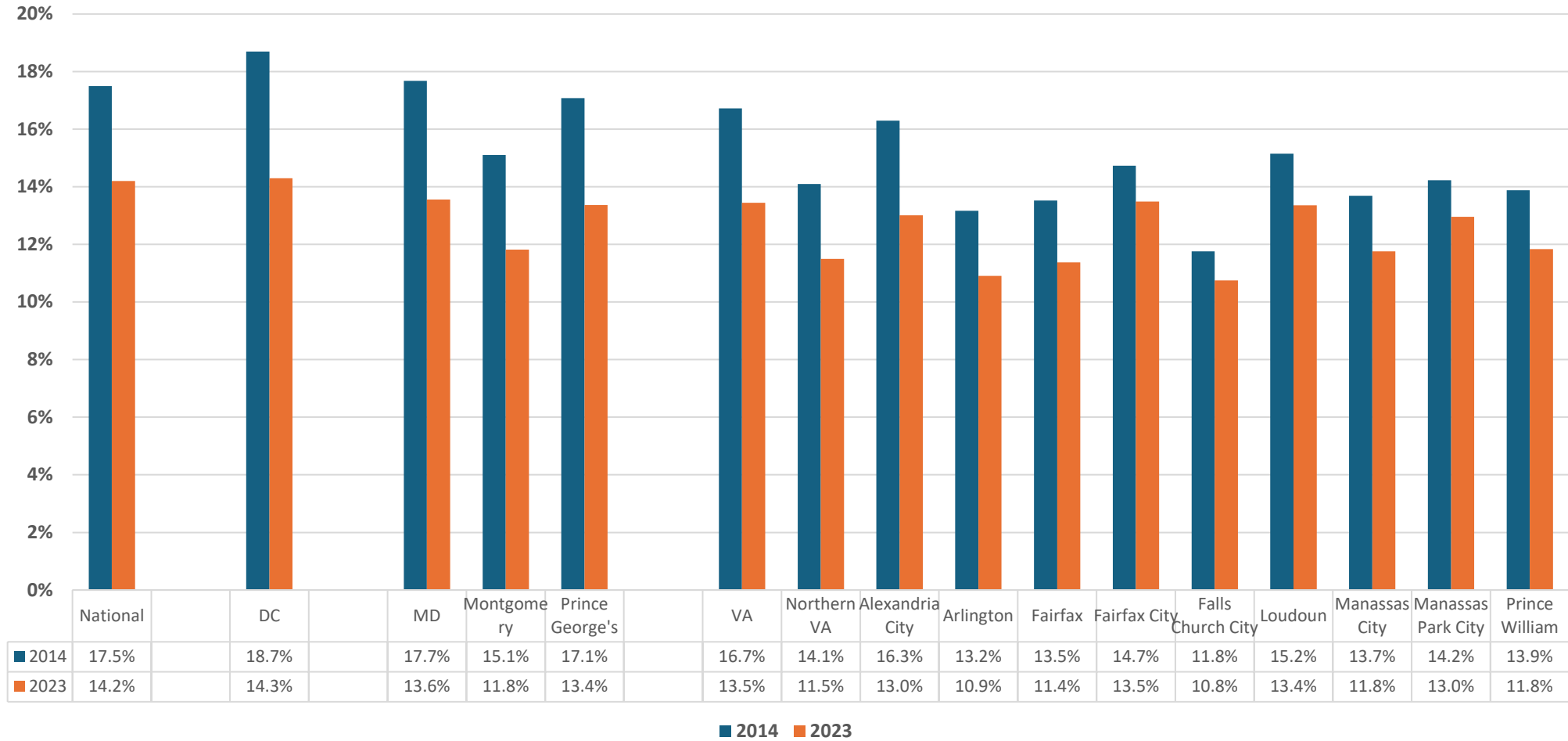
**Adjusted Per capita FFS Medicare payment for Hospital Inpatient services**  
**National, Maryland w/Select Counties, District of Columbia, Virginia & Northern Virginia**  
**2014 & 2023**



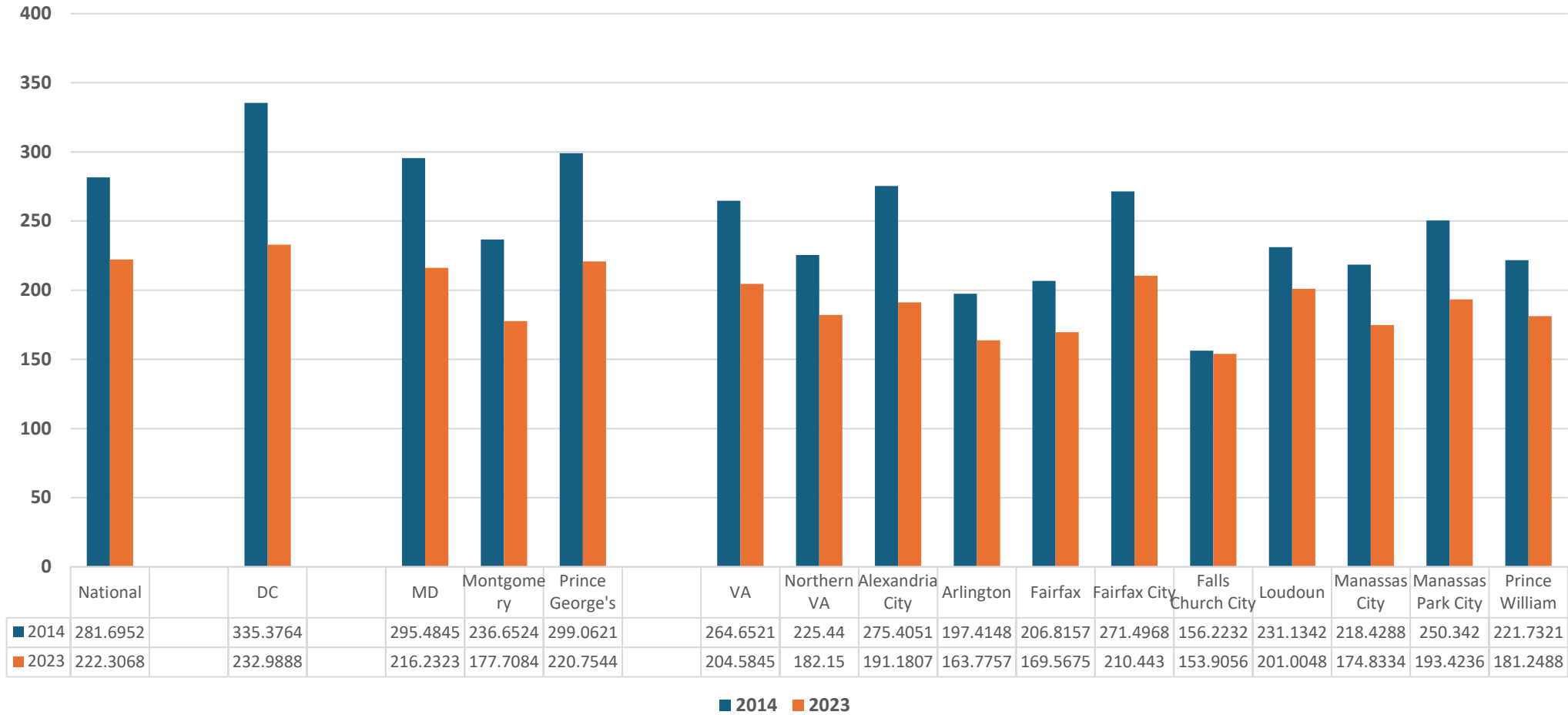
**Adjusted Per user FFS Medicare payment for Hospital Inpatient services**  
**National, Maryland w/Select Counties, District of Columbia, Virginia & Northern Virginia**  
**2014 & 2023**



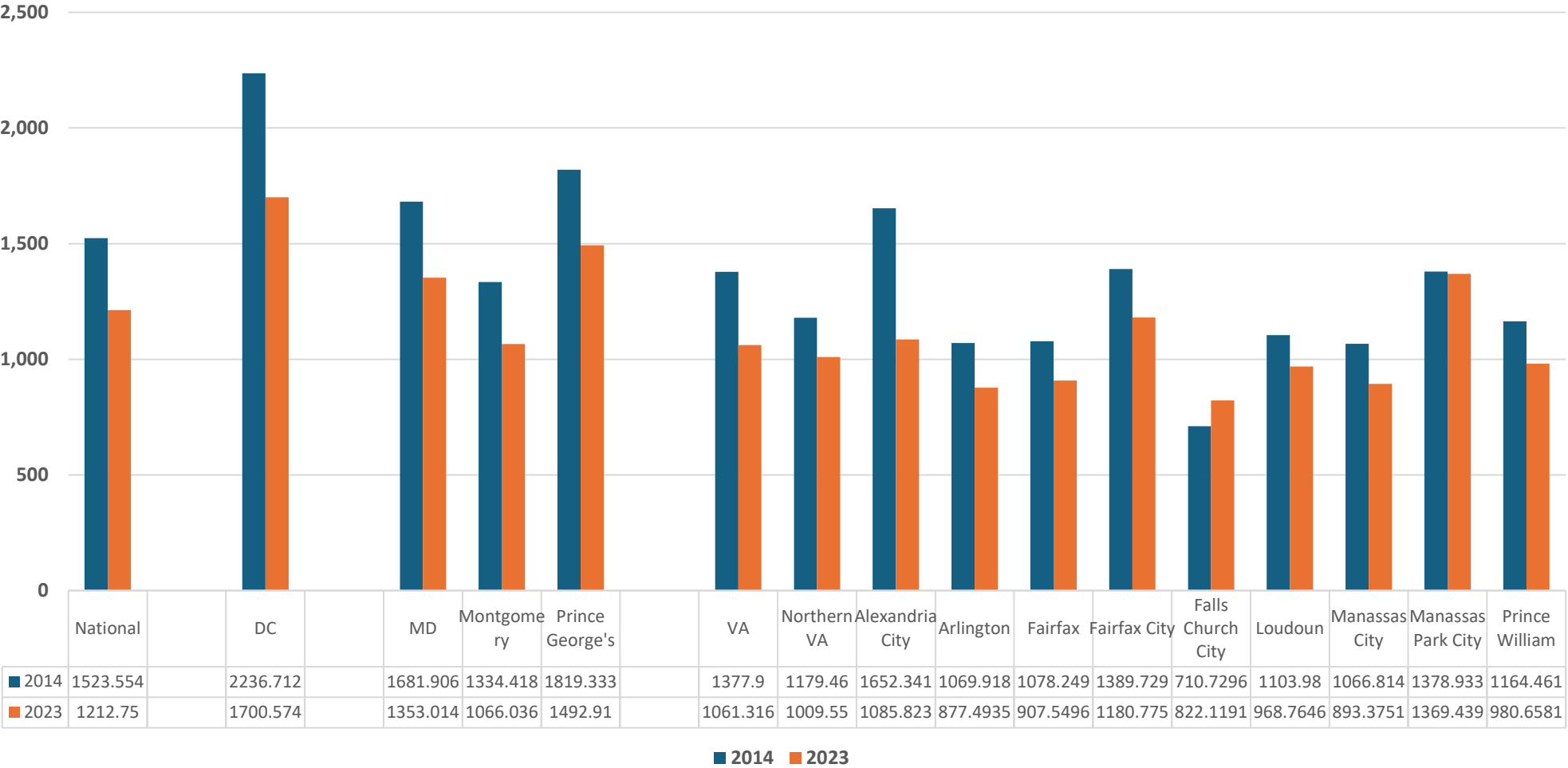
**Percentage of FFS Medicare beneficiaries using Hospital Inpatient services**  
**National, Maryland w/Select Counties, District of Columbia, Virginia & Northern Virginia**  
**2014 & 2023**



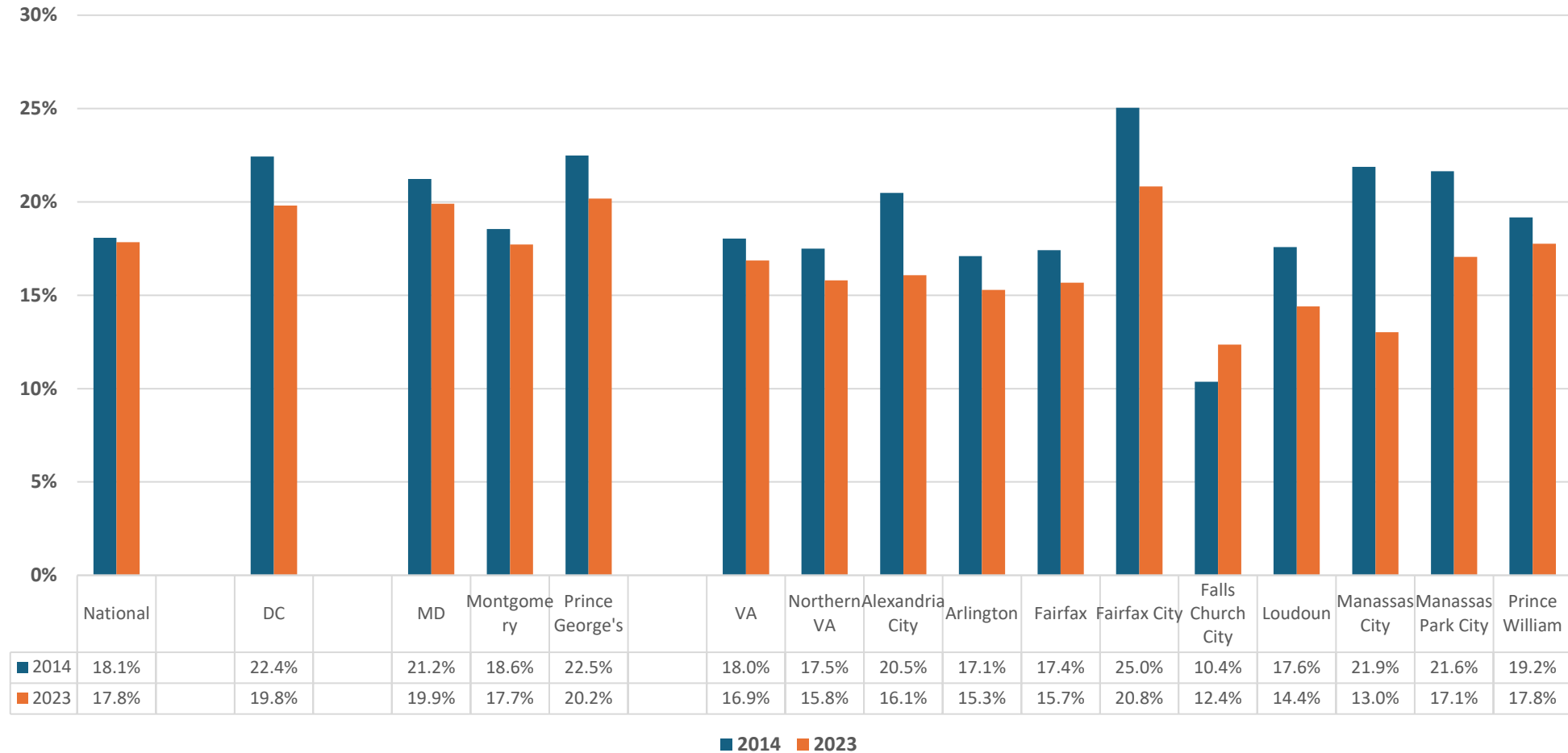
**Number of Hospital Inpatient covered stays per 1,000 FFS Medicare beneficiaries**  
**National, Maryland w/Select Counties, District of Columbia, Virginia & Northern Virginia**  
**2014 & 2023**



Number of Hospital Inpatient covered days per 1,000 FFS Medicare beneficiaries  
 National, Maryland w/Select Counties, District of Columbia, Virginia & Northern Virginia  
 2014 & 2023

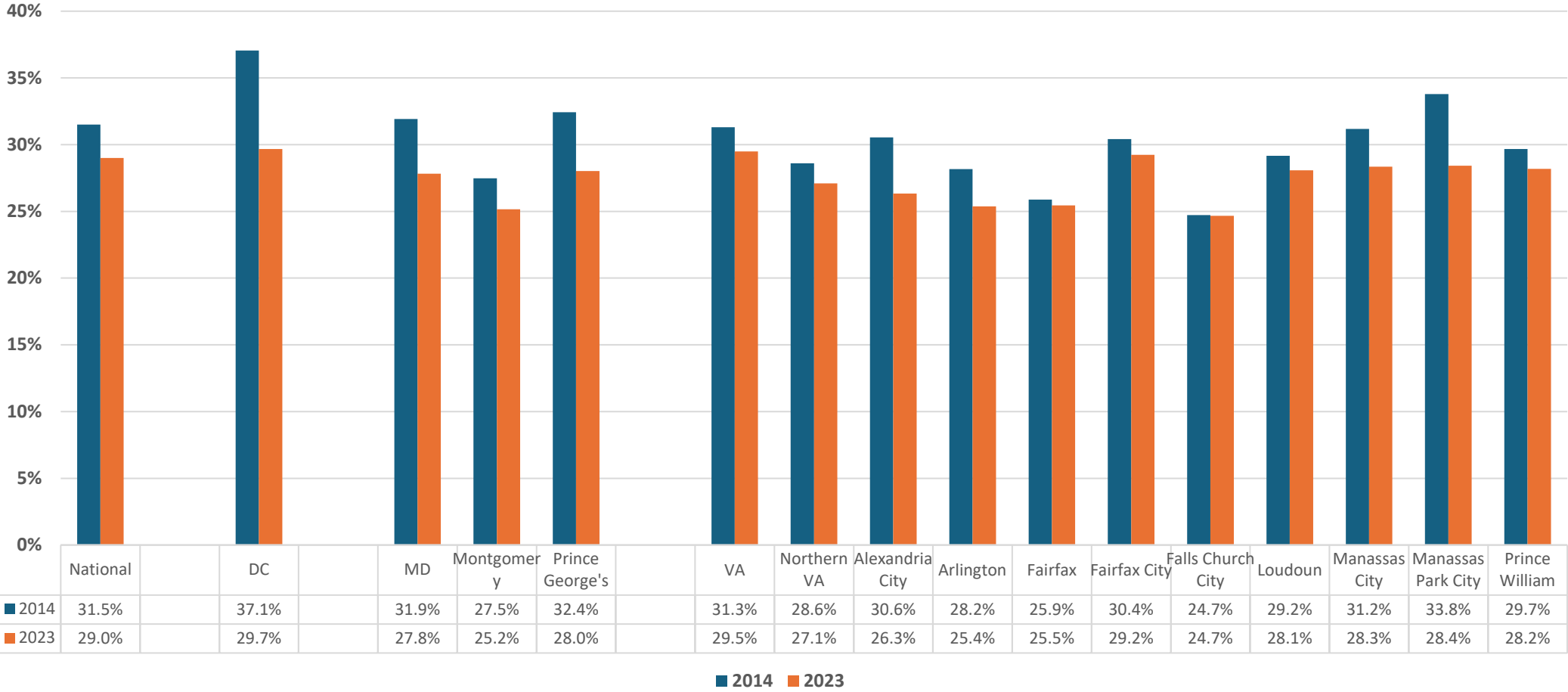


Percentage of inpatient readmissions within 30 days of an acute hospital stay  
National, Maryland w/Select Counties, District of Columbia, Virginia & Northern Virginia  
2014 & 2023

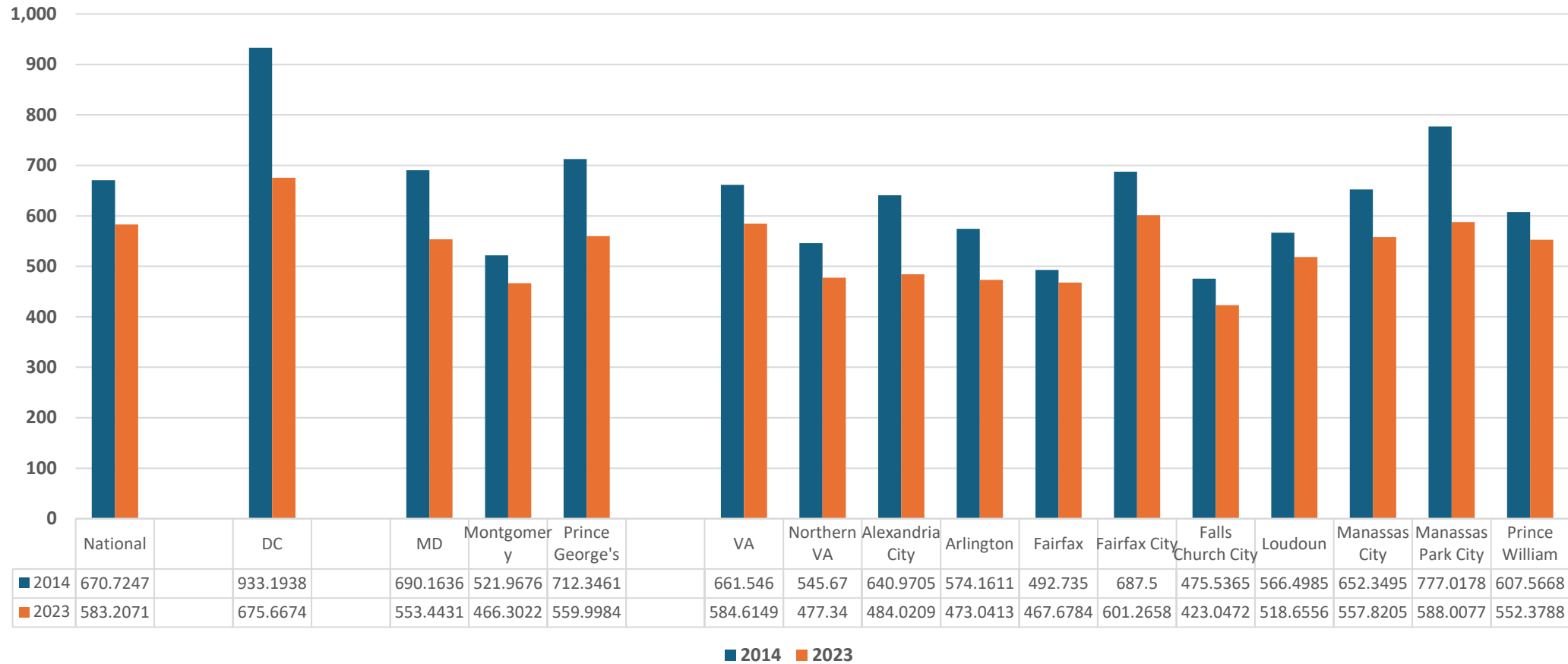




Percentage of FFS Medicare beneficiaries who had at least one Emergency Department visit National, Maryland  
w/Select Counties, District of Columbia, Virginia & Northern Virginia  
2014 & 2023



**Number of inpatient or hospital outpatient Emergency Department visits  
per 1,000 FFS Medicare beneficiaries visit**  
National, Maryland w/Select Counties, District of Columbia, Virginia & Northern Virginia  
2014 & 2023



**Actual per capita FFS Medicare payment for Ambulatory Surgery Center (ASC) services**  
**National, Maryland w/Select Counties, District of Columbia, Virginia & Northern Virginia**  
**2014 & 2023**



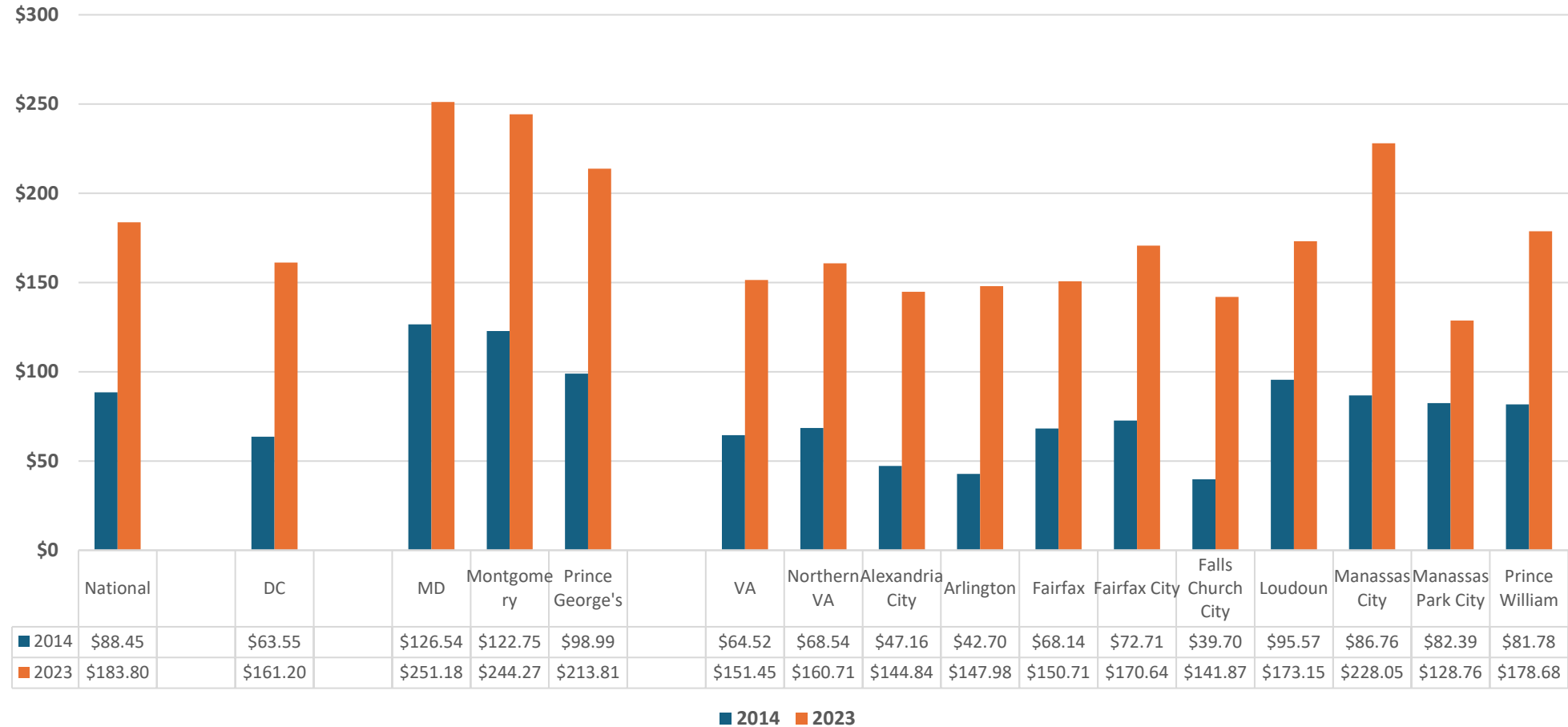
Actual per user FFS Medicare payment for Ambulatory Surgery Center (ASC) services  
 National, Maryland w/Select Counties, District of Columbia, Virginia & Northern Virginia  
 2014 & 2023



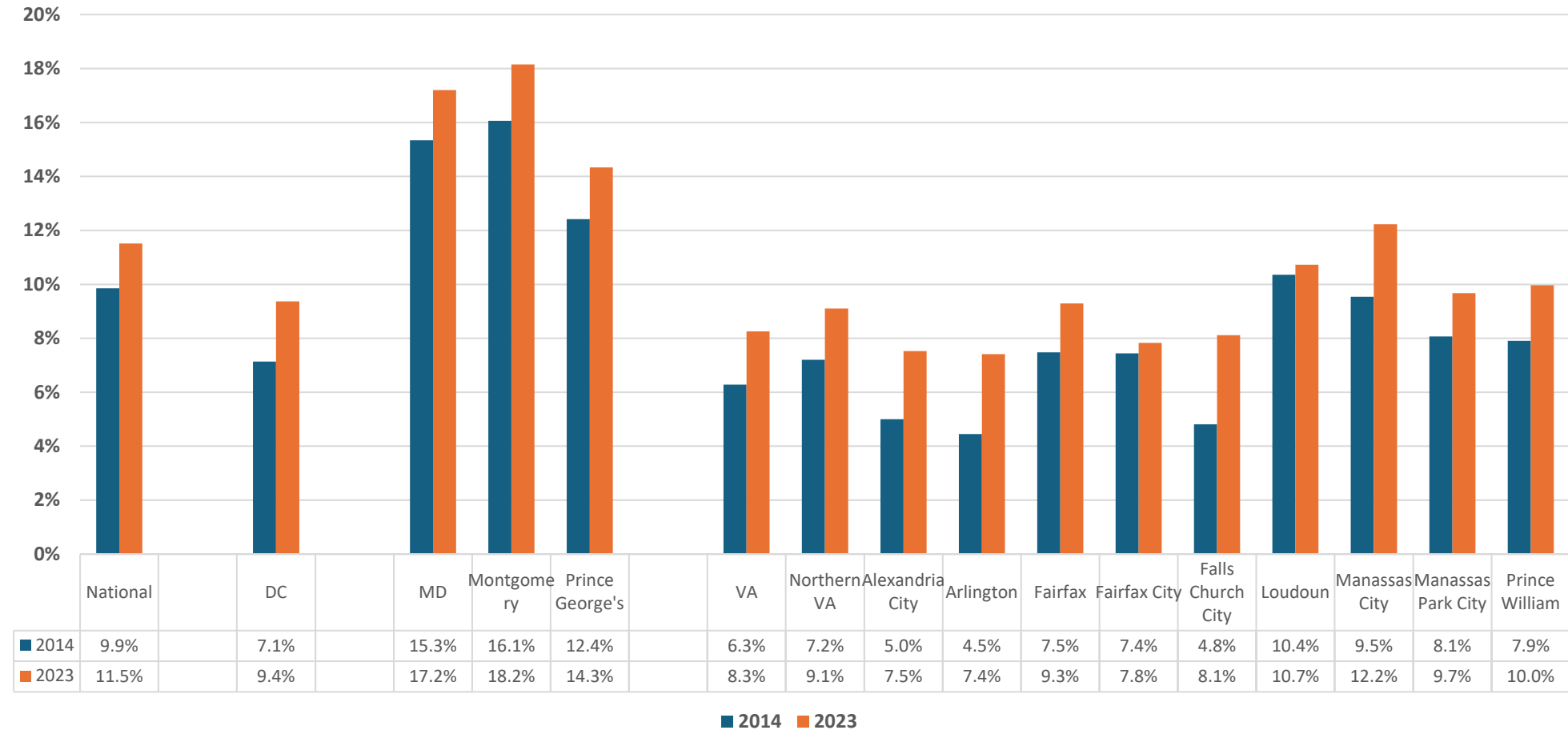
**Adjusted Per capita FFS Medicare payment for Ambulatory Surgery Center (ASC) services**  
**National, Maryland w/Select Counties, District of Columbia, Virginia & Northern Virginia**  
**2014 & 2023**



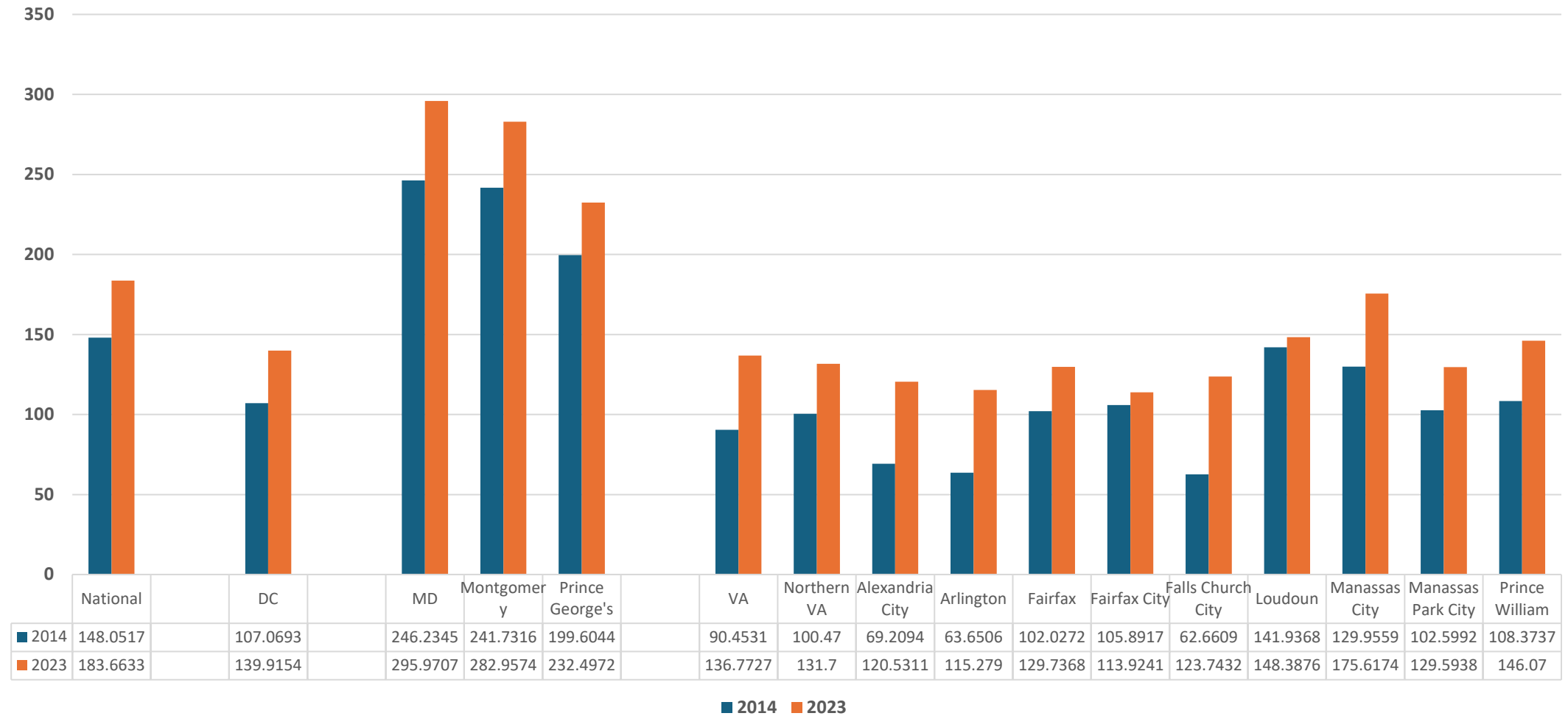
**Adjusted Per capita FFS Medicare payment for Ambulatory Surgery Center (ASC) services**  
**National, Maryland w/Select Counties, District of Columbia, Virginia & Northern Virginia**  
**2014 & 2023**



**Percentage of FFS Medicare beneficiaries using Ambulatory Surgery Centers (ASC)**  
**National, Maryland w/Select Counties, District of Columbia, Virginia & Northern Virginia**  
**2014 & 2023**

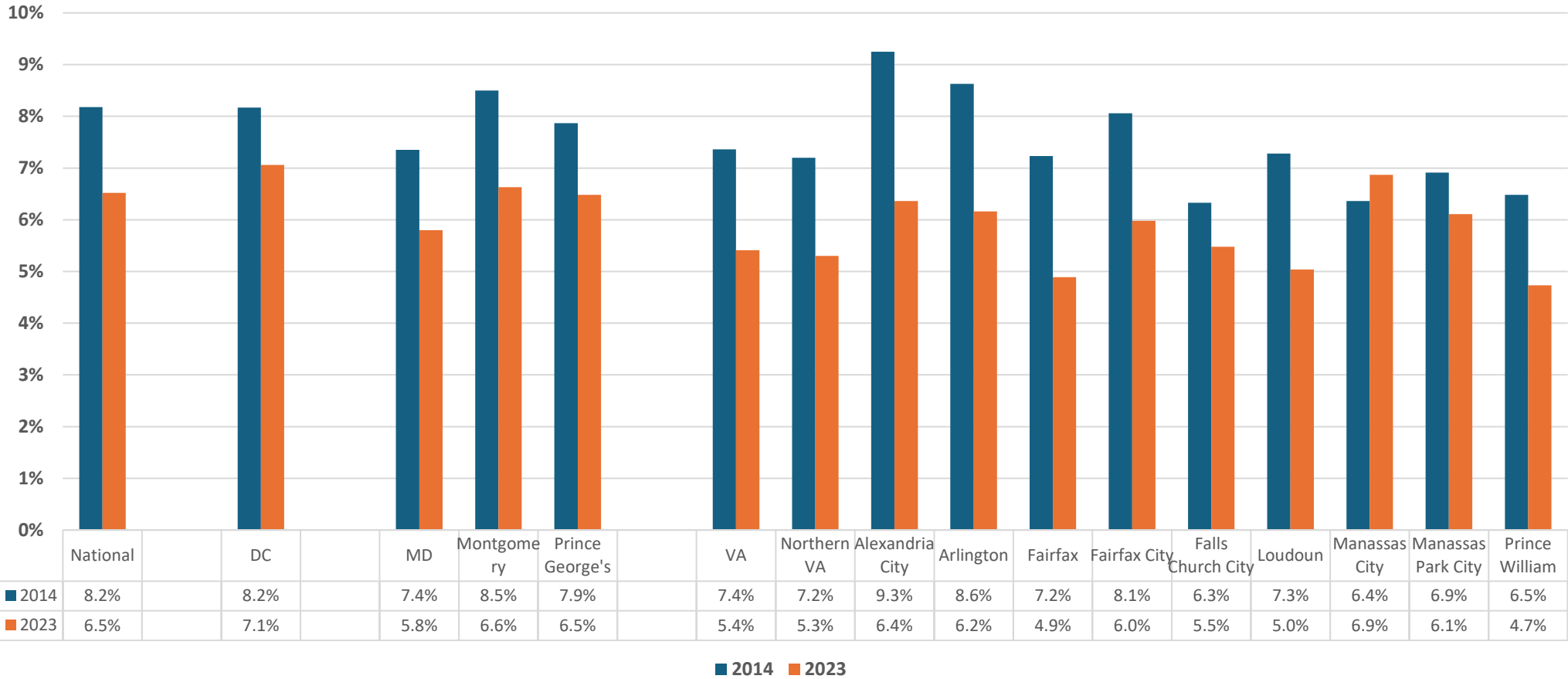


**Number of Ambulatory Surgery Center (ASC) events per 1,000 FFS Medicare beneficiaries National, Maryland  
w/Select Counties, District of Columbia, Virginia & Northern Virginia  
2014 & 2023**

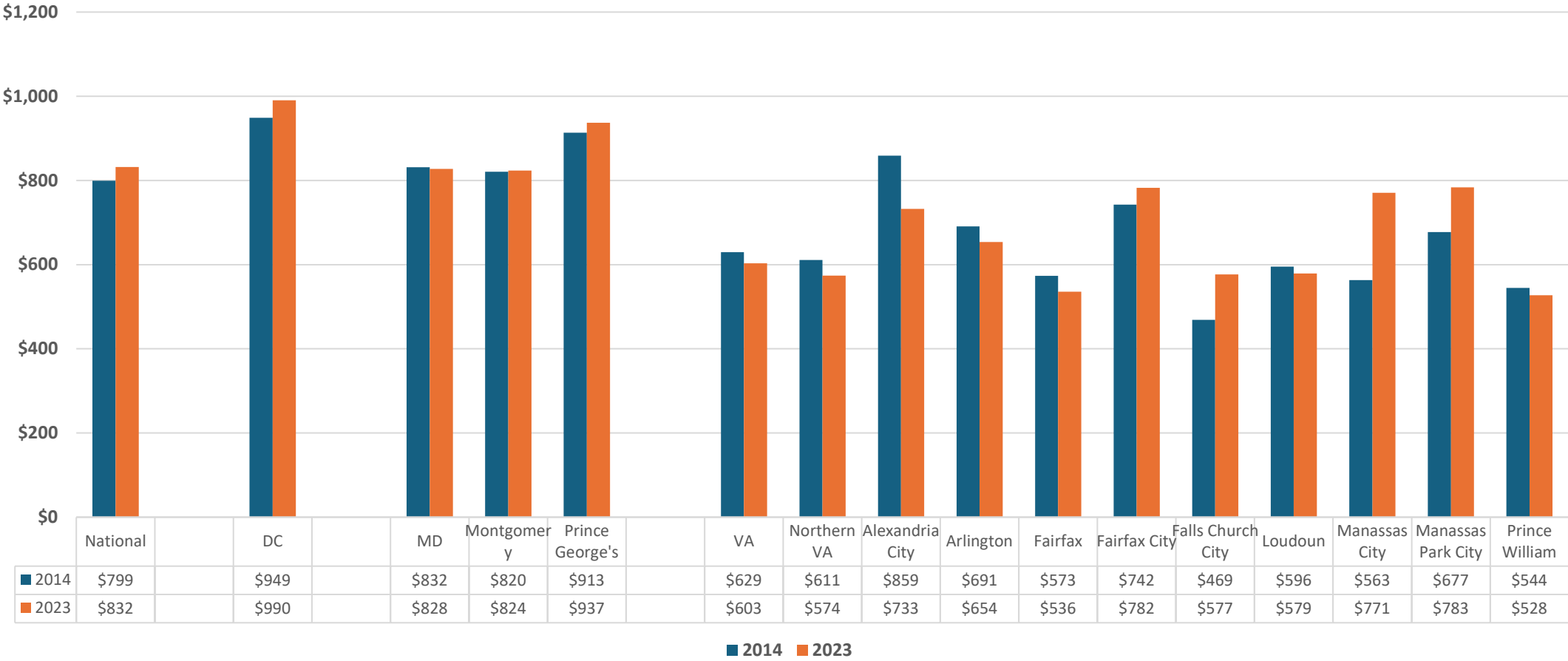




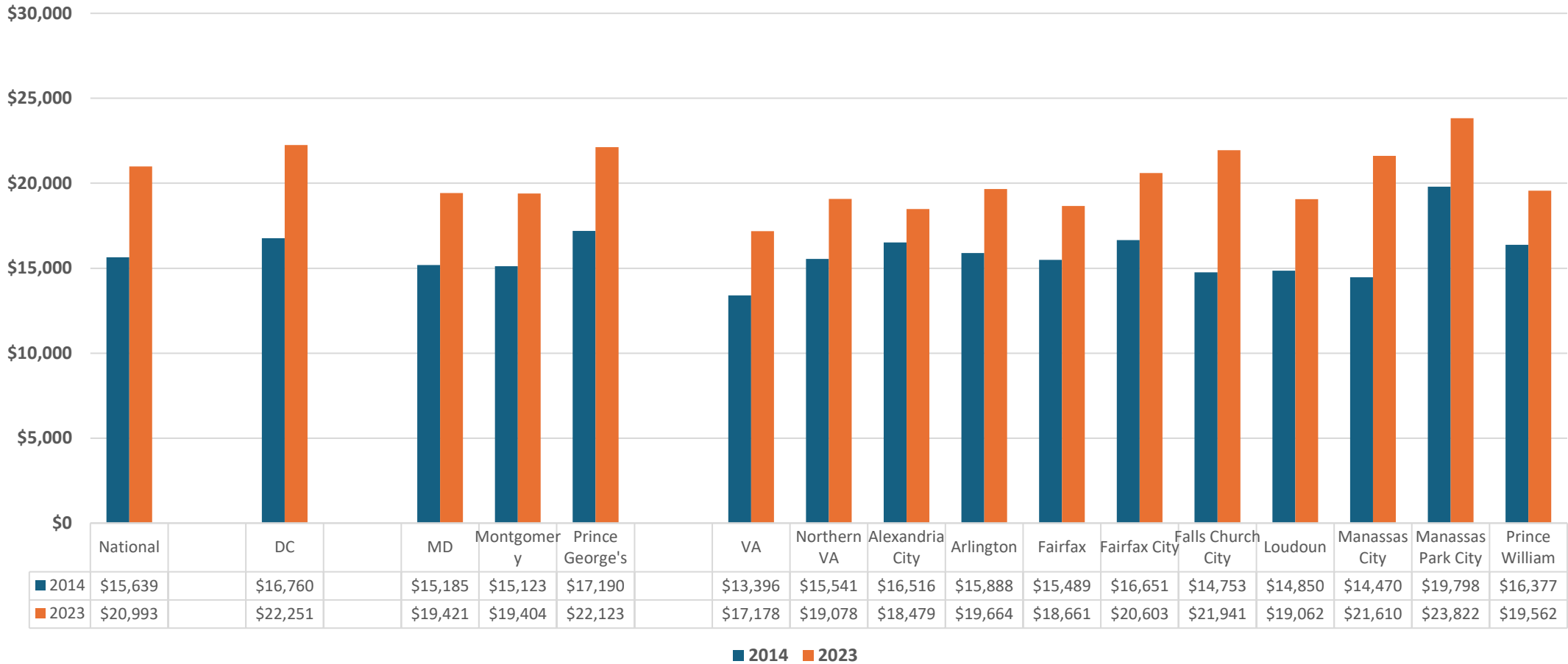
**Actual FFS Medicare payment for Skilled Nursing Facility (SNF) services as a percent of total National,  
Maryland w/Select Counties, District of Columbia, Virginia & Northern Virginia  
2014 & 2023**



Actual per capita FFS Medicare payment for Skilled Nursing Facility (SNF) services  
National, Maryland w/Select Counties, District of Columbia, Virginia & Northern Virginia  
2014 & 2023



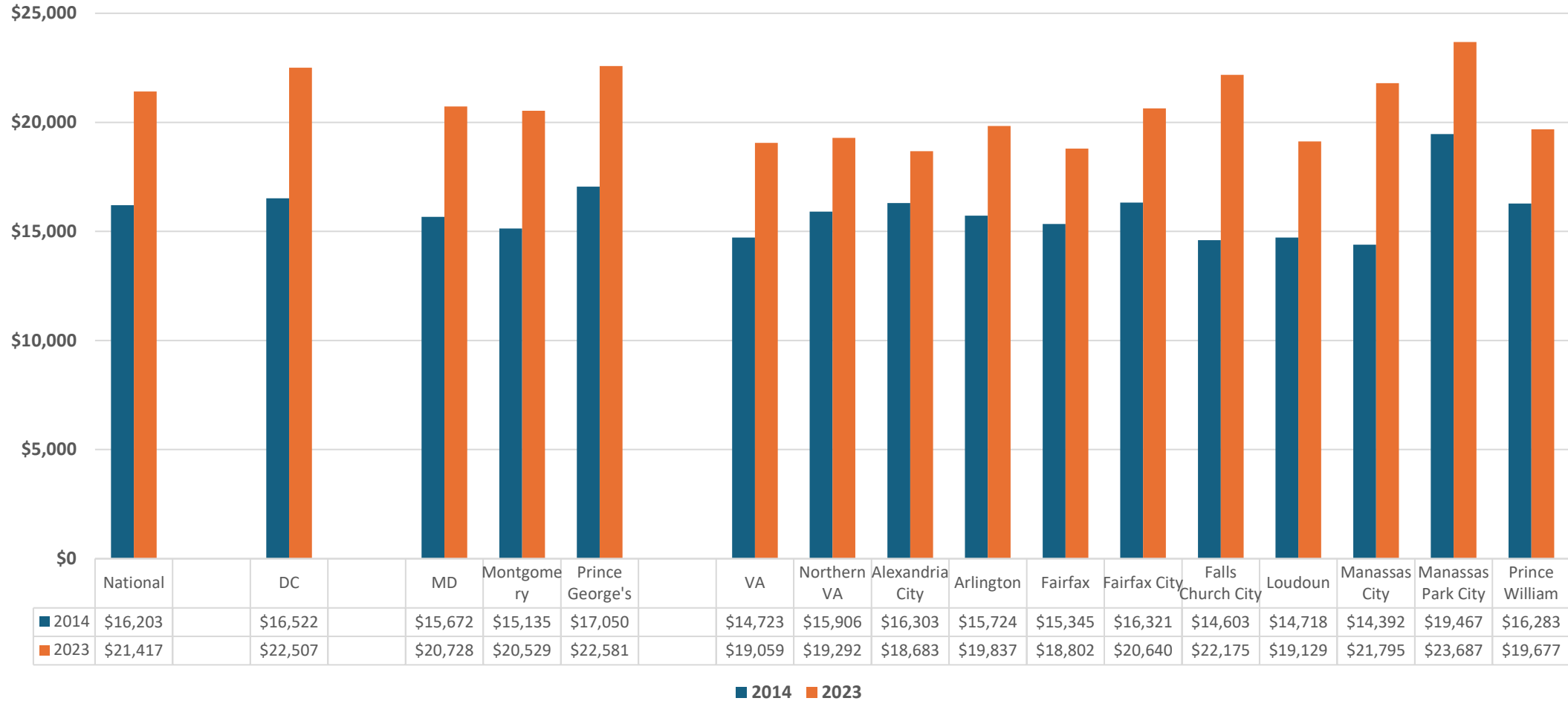
Actual per user FFS Medicare payment for Skilled Nursing Facility (SNF) services  
National, Maryland w/Select Counties, District of Columbia, Virginia & Northern Virginia  
2014 & 2023



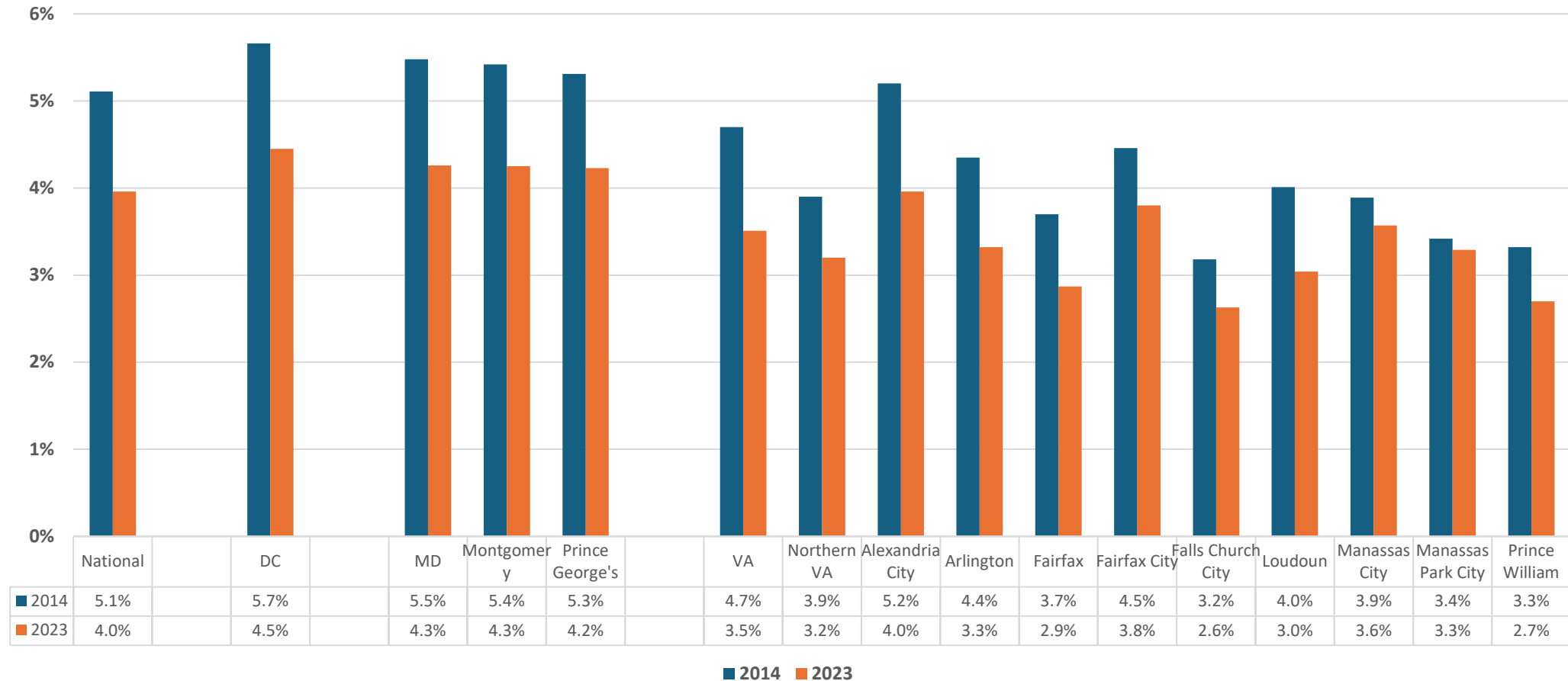
**Adjusted Per capita FFS Medicare payment for Skilled Nursing Facility (SNF) services**  
**National, Maryland w/Select Counties, District of Columbia, Virginia & Northern Virginia**  
**2014 & 2023**



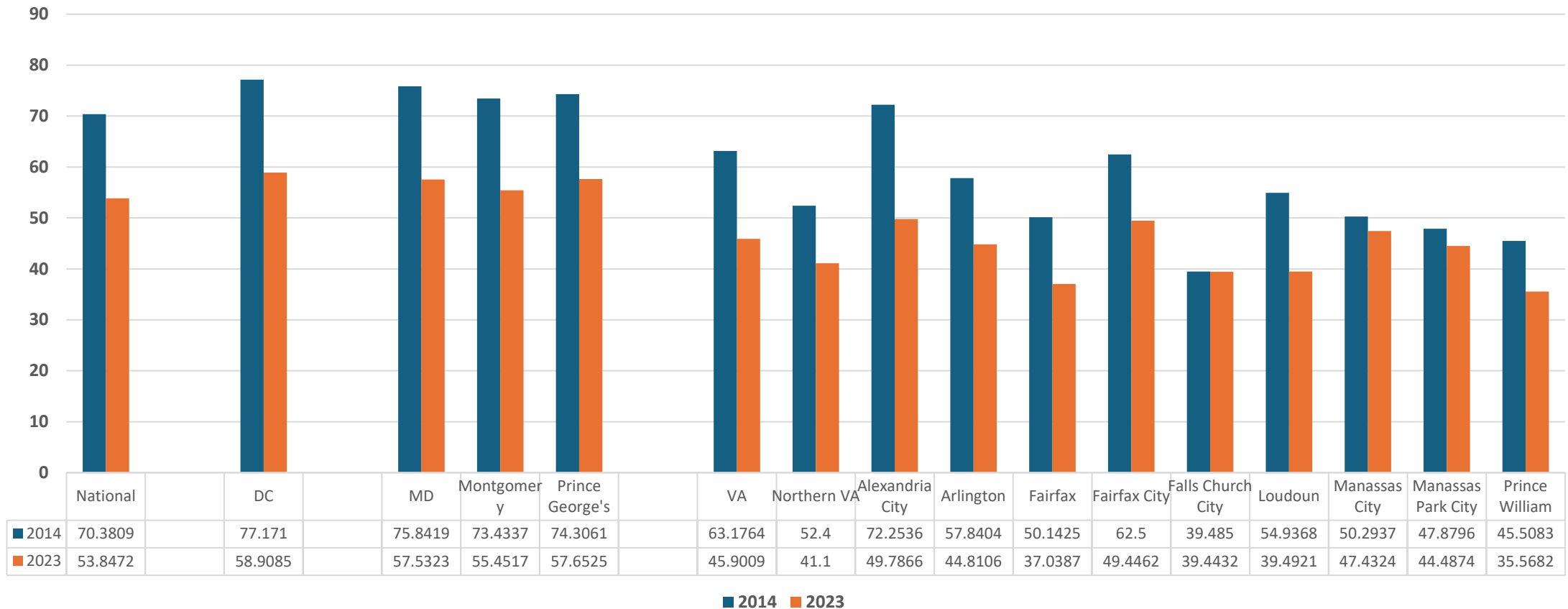
**Adjusted Per user FFS Medicare payment for Skilled Nursing Facility (SNF) services**  
**National, Maryland w/Select Counties, District of Columbia, Virginia & Northern Virginia**  
**2014 & 2023**



**Percentage of FFS Medicare beneficiaries using Skilled Nursing Facility (SNF) services**  
**National, Maryland w/Select Counties, District of Columbia, Virginia & Northern Virginia**  
**2014 & 2023**



**Number of Skilled Nursing Facility (SNF) covered stays  
per 1,000 FFS Medicare beneficiaries.**  
**National, Maryland w/Select Counties, District of Columbia, Virginia & Northern Virginia  
2014 & 2023**



**Number of Skilled Nursing Facility (SNF) covered days  
per 1,000 FFS Medicare beneficiaries.  
National, Maryland w/Select Counties, District of Columbia, Virginia & Northern Virginia  
2014 & 2023**

